

Urban Depositor Survey Report (Q1 2023)

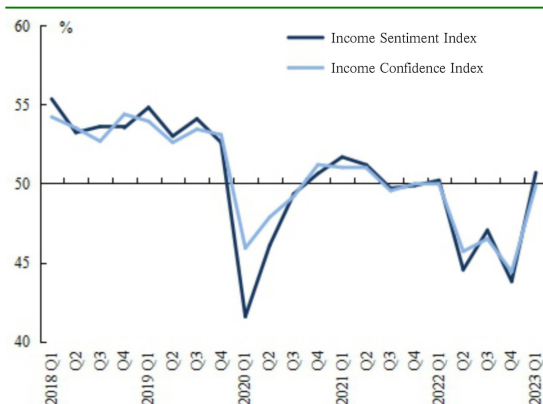
In Q1 2023, the People's Bank of China (PBOC) conducted a survey of 20,000 depositors in 50 cities across the country. The survey findings are as follows.

I. Income Sentiment Index

The income sentiment index for this quarter stood at 50.7 percent, up 6.9 percentage points from the previous quarter. Specifically, 15.9 percent of respondents saw income rise, up 5.0 percentage points from the previous quarter; 69.7 percent felt no big

change in income, up 3.8 percentage points from the previous quarter; and 14.5 percent reported a decline in income, down 8.8 percentage points quarter on quarter. The income confidence index registered 49.9 percent, up 5.5 percentage points from the previous quarter.

Figure 1: Income Sentiment Index and Income Confidence Index

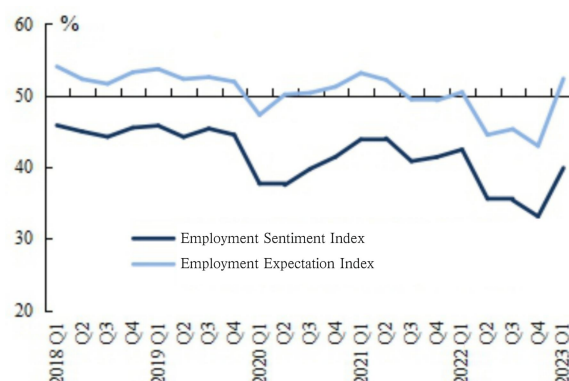


Source: PBOC Statistics and Analysis Department.

II. Employment Sentiment Index

This quarter's employment sentiment index rose by 6.8 percentage points from the previous quarter to 39.9 percent. Specifically, 13.2 percent of respondents were positive about the employment situation and felt finding a job was easy; those reporting just the

Figure 2: Employment Sentiment Index and Employment Expectation Index



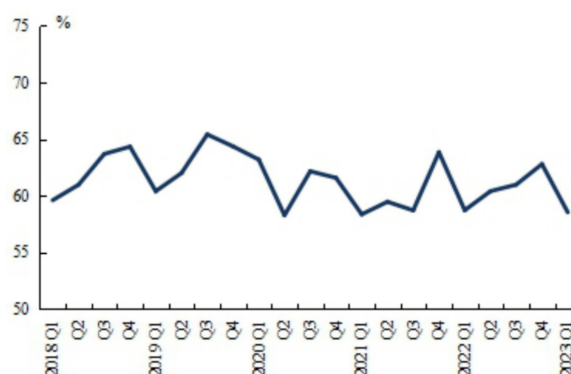
Source: PBOC Statistics and Analysis Department.

opposite or feeling unsure accounted for 41.2 percent; and 45.6 percent indicated “so-so”. The employment expectation index, at 52.3 percent, was up 9.4 percentage points from the previous quarter.

III. Price and House Price Expectations

The price expectation index for the next quarter fell by 4.2 percentage points from the previous quarter to 58.6 percent. Specifically, 24.6 percent of respondents expected prices to rise in the coming quarter; 54.2 percent anticipated little change; 9.5 percent said prices will go down; and 11.8 percent were unsure.

Figure 3: Price Expectation Index



Source: PBOC Statistics and Analysis Department.

With regard to house prices in the coming quarter, 18.5 percent of

respondents expected an uptrend; 54.1 percent said there will be little change; 14.4 percent anticipated a fall; and 13.1 percent were unsure.

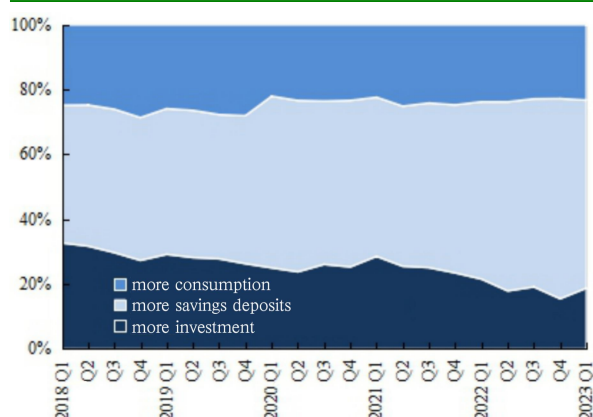
IV. Willingness to Consume, Save and Invest

Of the people surveyed, 23.2 percent preferred more consumption, up 0.5 percentage points quarter on quarter; 58.0 percent were in favor of more savings deposits, down 3.8 percentage points quarter on quarter; and 18.8 percent were inclined to make more investment, up 3.3

percentage points from the previous quarter. Of the preferred investment vehicles, the top three were wealth management products of banks, securities firms and insurance companies, products of fund companies and trust companies, and stocks, picked by 43.9 percent, 21.5 percent and 15.3 percent of respondents, respectively.

Regarding items on which they plan to spend more over the next three months, the picks, in descending order of preference, were education (28.4 percent), health care (27.6 percent), tourism (24.0 percent), social, cultural and recreational activities (19.9 percent), big-ticket items (18.9 percent), house purchase (17.5 percent) and insurance (14.1 percent).

Figure 4: Willingness to Consume, Save and Invest



Source: PBOC Statistics and Analysis Department.

Annex: Urban Depositor Survey Indexes

					Percent
	Price Expectation Index	Income Sentiment Index	Income Confidence Index	Employment Sentiment Index	Employment Expectation Index
Q1 2020	63.2	41.6	45.9	37.7	47.3
Q2 2020	58.3	46.1	47.9	37.5	50.1
Q3 2020	62.2	49.3	49.2	39.7	50.4
Q4 2020	61.6	50.6	51.2	41.4	51.2
Q1 2021	58.4	51.7	51.0	43.9	53.1
Q2 2021	59.5	51.2	51.0	44.0	52.2
Q3 2021	58.7	49.7	49.5	40.8	49.4
Q4 2021	63.8	49.9	50.0	41.4	49.3
Q1 2022	58.7	50.2	50.0	42.4	50.5
Q2 2022	60.4	44.5	45.7	35.6	44.5
Q3 2022	61.0	47.0	46.5	35.4	45.3
Q4 2022	62.8	43.8	44.4	33.1	43.0
Q1 2023	58.6	50.7	49.9	39.9	52.3

Source: PBOC Statistics and Analysis Department.

Note: Figures in this table are rounded to one decimal place. Possible discrepancies between year-on-year or quarter-on-quarter changes calculated from the figures and those published in the report are mainly due to rounding.

Compilation Introduction:

The urban depositor survey is a quarterly survey established by the PBOC in 1999. Fifty depositors are selected randomly on a quarterly basis from each of 400 bank outlets in 50 large, medium and small-sized cities across the country to make up a survey sample of altogether 20,000 depositors. The survey covers four aspects, i.e., overall judgment on economic operation, savings and liabilities, consumption, and background information of the respondents. The indexes in the urban depositor survey report are calculated using the diffusion index approach, i.e., the proportion c_i represented by each option is calculated, with different options given different

weights q_i (a weight of 1 to the "good/increase" option, 0.5 to "so-so/unchanged", and 0 to "poor/decrease") , and the final indexes are obtained by adding up the results of each c_i multiplied by the corresponding q_i . All the indexes range between 0 and 100%. An index reading above 50% indicates an upward trend or expansion while a reading below 50% is a sign of a downward trend or contraction.

The calculation of the major indexes is briefly introduced as follows.

1. Price Expectation Index: It is a diffusion index reflecting respondents' judgment on prices in the next quarter. This index is obtained by first deducting the number of respondents who choose "hard to say", then calculating the proportions of respondents who expect prices to rise and those who expect little change in prices in the next quarter, assigning to them the weights of 1 and 0.5 respectively, and adding up the results.

2. Income Sentiment Index: It is a diffusion index reflecting respondents' sentiment on current income. This index is obtained by first calculating the proportions of respondents who see income rise and those who see little change in current income, then assigning to them the weights of 1 and 0.5 respectively, and adding up the results.

3. Income Confidence Index: It is a diffusion index reflecting respondents' confidence in future income. This index is obtained by first deducting the number of respondents who choose "hard to predict", then calculating the proportions of respondents who expect income to rise and those who expect little change in income for the next quarter, assigning to them the weights of 1 and 0.5 respectively, and adding up the results.

4. Employment Sentiment Index: It is a diffusion index reflecting respondents' sentiment on current employment situation. This index is obtained by first deducting the number of respondents who choose "hard to say", then calculating the proportions of respondents who see employment rise and those who see little change in current employment, assigning to them the weights of 1 and 0.5 respectively, and adding up the results.

5. Employment Expectation Index: It is a diffusion index reflecting respondents' future employment expectations. This index is obtained by first deducting the number of respondents who choose "hard to say", then calculating the proportions of respondents who expect employment to be good and those who expect employment to be so-so in the next quarter, assigning to them the weights of 1 and 0.5 respectively, and adding up the results.